



**SERIES 850**

**SERIES 854**



**SWIVEL CASTOR      SERIES 850**

**SWIVEL CASTOR      SERIES 851**  
WITH TOTAL LOCK

**RIGID CASTOR        SERIES 854**

**Features:**

- Grey (RAL 7004) polyamide casing
- Double ball bearing swivel
- Plastic cover on swivel and axle
- Wheel-Ø 100 mm and 125 mm

**Options:**

- Further RAL colours available, minimum order quantity required, please contact STEINCO
- Further fittings available
- Stainless steel version on page 96

**HOSPITAL AND ELECTRO-  
MEDICAL EQUIPMENT**

**COMMERCIAL KITCHEN  
EQUIPMENT**

**BAKERY EQUIPMENT**



design award  
winner  
**1992**

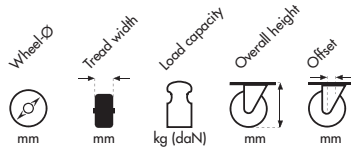
**SERIES 851**



## BALL BEARING WHEEL

- Non marking grey thermoplastic rubber tyred
- Polypropylene hub
- Ball bearing
- Screwed axle
- Wheel-Ø 100 mm, 125 mm

### FITTINGS



**SERIES 850**  
SWIVEL CASTOR

**SERIES 851**  
SWIVEL CASTOR WITH  
TOTAL LOCK

**SERIES 854**  
RIGID CASTOR

#### BOLT HOLE



mm	Wheel Ø	Tread width	Load capacity	Overall height	Offset
10,3	100	32	90	135	33
10,3	125	32	100	161	35
12,8	100	32	90	135	33
12,8	125	32	100	161	35

See page 114.

Code-no.

Code-no.

1.KJA.PTB	2.KNA.PTB
1.KAA.PUB	2.KEA.PUB
1.KJG.PTB	2.KNG.PTB
1.KAG.PUB	2.KEG.PUB

#### TOP PLATE



mm	Wheel Ø	Tread width	Load capacity	Overall height	Offset
77x67	100	32	90	135	33
77x67	125	32	100	161	35
90x70	100	32	90	135	33
90x70	125	32	100	161	35

Top plate dimensions shown on page 113.

Code-no.

Code-no.

Code-no.

1.KLA.PTB	2.KQA.PTB	5.K4A.PTB
1.KCA.PUB	2.KGA.PUB	5.J4A.PUB
1.KLO.PTB	2.KQO.PTB	5.K4L.PTB
1.KCO.PUB	2.KGO.PUB	5.J4L.PUB

#### SCREW



mm	Wheel Ø	Tread width	Load capacity	Overall height	Offset
M 10x25	100	32	90	135	33
M 10x25	125	32	100	161	35
M 12x25	100	32	90	135	33
M 12x25	125	32	100	161	35

Code-no.

Code-no.

1.KKS.PTB	2.KPS.PTB
1.KBS.PUB	2.KFS.PUB
1.KK1.PTB	2.KP1.PTB
1.KB1.PUB	2.KF1.PUB

#### PLAIN STEM



mm	Wheel Ø	Tread width	Load capacity	Overall height	Offset
18x62	100	32	90	135	33
18x62	125	32	100	161	35

Code-no.

Code-no.

1.KMA.PTB	2.KRA.PTB
1.KDA.PUB	2.KHA.PUB

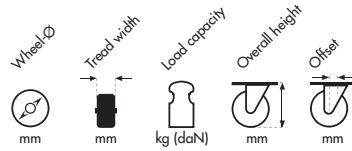
A list of adaptors for round and square tubing appears on page 112.



## BALL BEARING WHEEL

- Non marking **electrically conductive**, grey thermoplastic rubber tyred
- Polypropylene hub
- Ball bearing
- Screwed axle
- Wheel-Ø 100 mm, 125 mm

### FITTINGS



#### SERIES 850

SWIVEL CASTOR

#### SERIES 851

SWIVEL CASTOR WITH TOTAL LOCK

#### BOLT HOLE



mm	Wheel-Ø	Tread width	Load capacity	Overall height	Offset
10,3	100	32	90	135	33
10,3	125	32	100	161	35
12,8	100	32	90	135	33
12,8	125	32	100	161	35

See page 114.

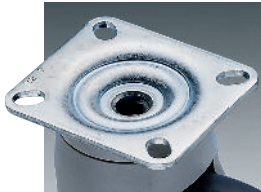
Code-no.

Code-no.

1.KJA.PT0  
1.KAA.PU0  
1.KJG.PT0  
1.KAG.PU0

2.KNA.PT0  
2.KEA.PU0  
2.KNG.PT0  
2.KEG.PU0

#### TOP PLATE



mm	Wheel-Ø	Tread width	Load capacity	Overall height	Offset
77x67	100	32	90	135	33
77x67	125	32	100	161	35
90x70	100	32	90	135	33
90x70	125	32	100	161	35

Top plate dimensions shown on page 113.

Code-no.

Code-no.

1.KLA.PT0  
1.KCA.PU0  
1.KLO.PT0  
1.KCO.PU0

2.KQA.PT0  
2.KGA.PU0  
2.KQO.PT0  
2.KGO.PU0

#### SCREW



mm	Wheel-Ø	Tread width	Load capacity	Overall height	Offset
M 10 x 25	100	32	90	135	33
M 10 x 25	125	32	100	161	35
M 12 x 25	100	32	90	135	33
M 12 x 25	125	32	100	161	35

Code-no.

Code-no.

1.KKS.PT0  
1.KBS.PU0  
1.KK1.PT0  
1.KB1.PU0

2.KPS.PT0  
2.KFS.PU0  
2.KP1.PT0  
2.KF1.PU0

#### PLAIN STEM



mm	Wheel-Ø	Tread width	Load capacity	Overall height	Offset
18 x 62	100	32	90	135	33
18 x 62	125	32	100	161	35

A list of adaptors for round and square tubing appears on page 112.

Code-no.

Code-no.

1.KMA.PT0  
1.KDA.PU0

2.KRA.PT0  
2.KHA.PU0